

# KEY NOTES

*fssl* flute society of saint louis

## INSIDE THIS EDITION:

-Message from the President	2
-Recent News	3
-Upcoming Events	4
-Flute Choir News	5
-Member Spotlight	6-8
-Flute Day Guest Artist	9
-Area Teacher List	10
-Photo Gallery	11
-Board Members	12
-For Sale	13
-FSSL Forms for 2022	14-17



## Mission Statement

*The purpose of the Flute Society of Saint Louis is to provide our members with events that showcase the flute in quality of musical programs and address other integral aspects of flute playing and musicianship.*

## SAVE THE DATE:

### VIRTUAL EVENT

**Saturday, February 19, 2022  
10-11:00 am**

*“Embracing Vulnerability as a  
Mindset for Musicians”*

**Presented by Maile Signorotti**

### FLUTE DAY 2022

**Saturday, April 9, 2022**

SIUE  
Dunham Hall  
Edwardsville, IL

### 12<sup>TH</sup> ANNUAL TRIVIA

**Summer 2022**

Wild Acres Banquet Hall  
2500 Ashby Rd.  
Overland, MO



## MESSAGE FROM THE PRESIDENT

Happy New Year! I hope each of you have enjoyed a blessed and safe holiday season. Nearing into the second year of the pandemic, I was anticipating writing this letter to inform you that FSSL was ready to bring you a full season of events; however, with the pandemic still here and a spike in covid numbers, the board of directors has agreed it would be best to ease back into in-person events with a reduced number of events for 2022. We have taken the last year to review the best protocols for providing a safe and healthy environment to serve our members.

Last year did bring many hardships for us as an organization, but we are pleased with the success and audience attendance for our virtual events.

Mark your calendars! FSSL would like to announce the following events for Spring 2022: a virtual lecture presented by Maile Signorotti, Flute Day, and our 12<sup>th</sup> Annual Trivia Fundraiser. Be sure to check our website for the most up-to-date information regarding these events. If you have any comments or concerns, please email me at [slmonier@yahoo.com](mailto:slmonier@yahoo.com).

If you are interested in becoming more involved or volunteering with the Flute Society, please contact a board member. We would love to hear from you!

I look forward to sharing this season with you all and hope to meet as many of you as possible at our events this season! I hope you will engage with the Flute Society, attend the events, and continue to show your support for the organization.

Sincerely,  
Shelly L. Monier, D.M.A.

## PLEASE SUPPORT OUR SPONSORS:

### Flute Specialists, Inc.

606 S. Rochester Rd.  
Clawson, MI 48017  
248-589-9346  
[info@flutespecialists.com](mailto:info@flutespecialists.com)  
[www.flutespecialists.com](http://www.flutespecialists.com)

### Nottlemann Music Co.

1570 Lemay Ferry Rd.  
St. Louis, MO 63125  
(314) 631-1486  
[nottlemannmusic@aol.com](mailto:nottlemannmusic@aol.com)  
[www.nottlemannmusic.com](http://www.nottlemannmusic.com)

### Missouri Illinois Musical Arts Consortium

[dsmithi@siu.edu](mailto:dsmithi@siu.edu)  
[www.mimac-stl.org](http://www.mimac-stl.org)



## DONATIONS WELCOME!

FSSL strives to bring high quality and interesting programming to St Louis to benefit the community. As a not-for-profit organization, the expense of providing our programming is always a concern. We rely heavily upon membership fees and donations so that we can continue to bring this caliber of programming to you. Please note that FSSL is a 501(c)(3) organization, and donations that you make will be tax deductible (please consult your tax advisor if you have any questions). We thank you for your support, as your contributions will continue to keep FSSL financially healthy and a strong organization.

## RECENT NEWS

### RENEW YOUR MEMBERSHIP!

If you have not renewed your membership, now is the time to do it. See the membership form at the end of this issue of Key Notes for more information.



### COVID – 19 UPDATES AND POLICIES

The Flute Society of Saint Louis is committed to providing the safest possible experience for all members, and to the well-being of the community at large. We have established the following plan for all in-person events in 2022, which are in accordance with the World Health Organization’s recommendations, as well as those of the Centers for Disease Control.

The plan for a safe, Covid-free Events is as follows:

1. Full COVID-19 vaccination is recommended for all persons in attendance.
  - a) Proof of vaccination may be requested upon entrance to the event.
  - b) If not vaccinated, proof of a negative Covid test within 24 hours of the event must be presented.
2. Appropriate social distancing will be implemented for all indoor and outdoor spaces and facilities.
3. All members of the audience are required to wear a mask.
4. Performers are not required to wear a mask.
  - a) Performers will be placed at an appropriate distance away from the audience.
5. Each event will be in large enough spaces for social distancing.



## FLUTE DAY 2020

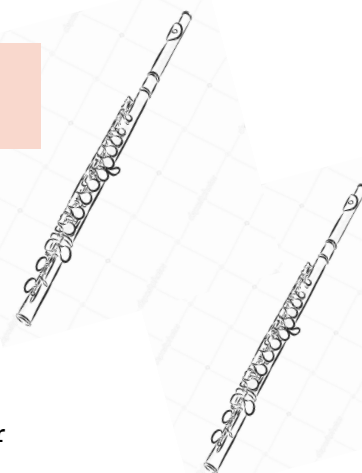
### FSSL 2020 Young Artist Competition Winners

#### High School Division:

- 1st Prize: Jillian Russell
- 2nd Prize: Isabella Saldaña
- 3rd Prize: Olivia Norton
- Honorable Mention: Lexi Balog  
Analise Best

#### College Division:

- 1st Prize: Lillie Kang
- 2nd Prize: Maria Schmeer
- 3rd Prize: Reese Emery
- Honorable Mention: Tiffany Smith  
Colleen McCracken



# UPCOMING EVENTS

## FLUTE DAY 2022

Please join us for our annual Flute Day scheduled for Saturday, April 9, 2022, on the campus of SIU Edwardsville. This year's featured guest artist is Dr. Terri Sánchez, newly appointed flute professor at Bowling Green State University. Dr. Sánchez is a Miyazawa Performing Artist and author of *"The Aspiring Flutist's Practice Books."*



Other events on the program will include the College and High School Young Artist Competitions, Middle/High School Masterclass, the Mazzoni Duo, a teacher roundtable discussion, and of course, a masterclass, presentation, and concert by our featured artist.

### Competition and Masterclass Reminders:

If you would like to perform in one of the Flute Day competitions or masterclasses, check out our website for more details.

**Application deadline is February 28, 2022!**



## "EMBRACING VULNERABILITY AS A MINDSET FOR MUSICIANS" - PRESENTED BY MAILE SIGNOROTTI

Come join Maile Signorotti and the Flute Society of St. Louis as we explore these thoughts and feelings more in the wake of the pandemic season, and how we can take steps to conquer these feelings and more by challenging ourselves to embrace vulnerability. In this open conversation with Maile, we will walk through ways to explore embracing our vulnerability as a mindset for musicians that can drastically improve your mental, emotional, and even your physical health. Join FSSL in this conversation online via Zoom on Saturday, February 19, 2022 from 10-11am.



## 12<sup>TH</sup> ANNUAL TRIVIA NIGHT

Due to Covid restrictions, FSSL is waiting on permission to schedule our annual trivia fundraiser at the Wild Acres Banquet Hall. Once we are given permission to book the venue, we will update our website with the date for this event. We are optimistic that we can schedule this sometime in June 22. If you have any questions or concerns, please send us an email at [flutesocietyofsaintlouis@gmail.com](mailto:flutesocietyofsaintlouis@gmail.com).





# FLUTE CHOIR NEWS

We are currently seeking a new Director to conduct the FSSL Flute Choir for 2022. The ensemble meets Sunday evenings from 6:30-8:00 pm; more information on rehearsal space in the coming months. If you are interested in conducting this group, please email Shelly Monier at [slmonier@yahoo.com](mailto:slmonier@yahoo.com).

## Duties Include:

- Organizing and scheduling concerts
- Become a member of the Board of Directors
- Maintaining current library of flute choir repertoire
- Conducting and coaching rehearsals

**A yearly stipend is given with this position for time and service to the group and our organization.**

The FC is comprised of flutists (advanced high school, college age and above) from the St. Louis community of varying careers and musical backgrounds. The choir performs regularly during the season (September through May) at venues such as nursing homes, FSSL events, church services, school tours, flute recitals, etc.

Our ensembles feature piccolo, C-flutes, alto, and bass flutes. Members have the opportunity to play on all instruments of the flute family as we take turns on parts. Musical selections include a diverse mix of popular music, arrangements of famous classical works, and modern compositions written for flute ensembles.



*Please contact us at [flutesocietyofsaintlouis@gmail.com](mailto:flutesocietyofsaintlouis@gmail.com) if you would like to join this wonderful ensemble.*



## MEMBER SPOTLIGHT: MARCIE MONACO

### ***Describe your musical background.***

Music was part of my life since before I could remember. My mother played the piano, the string bass, and also sang, and there was always music in our home in some form or another. At bedtime, she would tell us, "If you lie down very quietly, I'll play the piano for you while you rest." We found that prospect exciting when we were little, so we tried extra hard to go to bed without any protests or late-night chatter among ourselves. We often sang together around the piano or at church. I took piano lessons for a while when I was younger, but I was fired by my piano teachers due to failure to practice, but I did lots of playing on my own, and then again in college.

### ***When did you start playing the flute?***

I always assumed I would play an instrument in 5th grade band because that's just something our family did, and I remember being so excited when I finally reached that milestone. The flute always appealed to me, but I'm not sure why. The instrument didn't come easily to me as I had hoped. When we auditioned for chairs in 6th-grade band, I placed 8th out of 8, or was it 10th out of 10? Either way, I was dead last- the worst flutist in the entire 6th grade. Sitting last chair was a humiliating experience and I wanted to quit, but I hung in there. I gradually worked my way up the food chain, and then one day when I was 16, my mom brought home a copy of the flute part of Bach's Brandenburg Concerto no. 2. It was WAY above my head, but that summer I was bored, it was too hot to do anything outdoors, and we didn't have cable TV, so I ended up working on the piece all day, every day, throughout the entire summer. When I went back to school in the fall, somehow my technical skills had gone from slightly above average to exceptional.

### ***What made you want to become a musician?***

I grew up in a very small farming community in eastern Colorado along the Kansas-Nebraska border, and although we had a decent little public-school band, we really didn't have access to private teachers or the type of musical opportunities found in larger communities and schools. When a newer band director, who was a flutist, moved to an adjacent county, I was able to take about a year of lessons with her as a high school senior, and she help coach me successfully into All-State Band, which was the highlight of my high school career. During our final All-State performance, while we were all dressed up, the auditorium was packed, and the stage lights hot on our faces, I remember playing Bach together and there was this sensation of the band moving and breathing together as a single, living organism. It's difficult to describe, but it was a magical, mystical experience, and I got goosebumps. That was the moment when I understood the true power of music and what a privilege it was to participate in creating moments like these.

## MEMBER SPOTLIGHT: MARCIE MONACO

### ***What are some of the biggest struggles you've faced as a musician?***

My musical journey has been fraught with complexities in every stage. Even though I had pretty fast fingers as a high schooler, my tone was unfocused and airy and I couldn't improve my sound. My flute instructor in college wasn't able to help me overcome this struggle other than advising me to play more long tones. When our studio hosted visiting artists (some of whom were quite prestigious), I would work with them on tone improvement, but to no avail. On my own, I came to realize I could mitigate some of the air in my tone by forcefully squeezing my lips and face, but by the end of my freshman year I was in a lot of pain and I knew I couldn't go on this way. I raised the white flag at this point, deciding that I must really be beyond help if none of these experts knew what to do with me. With a tremendous amount of grief, I changed my major from music to chemistry and put my flute away in the closet. More than 15 years later, I was married and had just given birth to my sixth baby when we began researching band instruments for my oldest child (who is now in college!). As we researched and discussed instrument options as a family, I started to feel the longing to return to music. I called the local flute professor where we lived and asked if she would take me on as a student, and the rest is history...

### ***Wait a minute, you have six children? Are any of them musical?***

I've had two more babies since then, so now I have EIGHT children. Music lessons aren't optional in our house. There is solid research out there showing that music literally changes your brain in areas that deal with memory, motor skills, and language development. One study showed that preschool students who have had private lessons are better able to focus on tasks, work more accurately, and they receive fewer corrective statements from teachers or other adults. Another study showed that after a year of music lessons, elementary students had more far more growth in academic, cognitive, and psychological processes than their non-musical peers. Other studies have shown that students who study music score higher in standardized tests, have better emotional regulation, are better able to verbalize their ideas, can interact better with adults and peers. Aside from those benefits, I simply want my children to be able to create music for their own enjoyment.

### ***What has happened musically in your life since you started taking lessons again?***

My husband is in the Air Force and we've been blessed to live all over the world. I've made it a point to take lessons wherever we've lived because I was driven to become a better musician. And yes-my tone finally cleared up!! A few years after I resumed lessons, I decided that I would like to finish my flute performance degree if we ever moved near a university, which I did! In recent years, I've performed as a soloist for special events, in the pit orchestra for musicals, and in a variety of smaller and larger ensembles. I help coach chamber groups and sectionals at the local schools, and I've enjoyed building a vibrant private teaching studio. Watching my students grow into competent musicians has been such an indescribably fantastic experience. I'm currently working up a recital featuring the music of female composers, and I'm in the process of prepping an audition for graduate school.

### ***What are your favorite practice tips?***

Make an appointment in your calendar to practice every day, and then show up and start playing. If you aren't in the right head space, just getting started is often the hardest part. Play something you love to warm up and then go from there. Keep your instrument out of its case and try to find short pockets of time throughout the day to pick it up and knock out a few scales here and there, without committing to a longer session. If you aren't in school, it can be hard to find occasions for recreational music-making. Find friends or colleagues to play with and meet often. The more you play with others, the better you get! Schedule performances at your church or a local nursing home with other musicians or just by yourself. These scheduled performances will motivate you to get to work! I read an article by Jeanne Baxtresser several years ago that advised musicians to play through their piece(s) from beginning to end with a metronome at 1/2 speed the night before a performance, focusing on accuracy, which will seal the piece in your muscle memory. Resist the urge to fiddle with it anymore that day, but run through the music once or twice the next day without wearing yourself out. This advice has served me well.

## MEMBER SPOTLIGHT: MARCIE MONACO

### ***What is your favorite style of music to listen to? To perform?***

As much as I love Bach, Beethoven, and Brahms, I really enjoy the works of contemporary composers. Blaz Pucihar, Avner Dorman, and Yuko Uebayashi are a few that I enjoy for both listening and performing. The composer Jennifer Higdon (whom I also love) said in a recent interview that the general public believes that classical music is just about a bunch of dead white guys, but music is a living art form that is forever growing and changing.

### ***What advice would you have given yourself when you were younger, and what would you share now with musicians or parents?***

\*Learn your scales! And learn them while you are young!

\*It doesn't matter how old you are, if you feel called to dance, paint, make music, learn a language, etc., EVEN IF YOU'RE AN ABSOLUTE BEGINNER, then you should do it! The arts feed our souls, connect us to humanity, and are a gift we can give to others.

\*Looking back on my life, I'm sad that I spent so much time feeling like a failure and lost so many years of music-making. I was young and inexperienced and didn't realize that even amazing instructors sometimes don't have all the answers. A problem might be difficult or unusual, but someone, somewhere can help find an answer. If you aren't getting the help you need, go somewhere else, but don't stop trying. This advice is applicable to all areas of life, not just music!

\*I would like to encourage other parents to make music lessons an imperative part of your family life, but help your children find their own musical identity. Parents often sign their children up for piano lessons, and while there's nothing wrong with piano per se, they often don't realize that there are so many other music opportunities out there. If your child isn't crazy about the piano, then it might be time to find a new instrument. How about the tuba or the marimba or the bagpipes???

\*Families and children don't understand that lessons entail some effort, and it's easy to get frustrated when progress is slow. When the novelty has worn off and the child starts to push back a few months later, it's easy to throw up your hands and say, "Oh well, we tried. I guess piano just isn't in the cards!" But consider, have you ever met an adult who says, "I quit lessons as a child and I sure am glad!" Every adult I've ever spoken with speaks with regret about quitting lessons. Don't let your child regret that they abandoned music!

\*Sometimes students don't practice because they don't enjoy music, but in most cases, STUDENTS DON'T ENJOY MUSIC BECAUSE THEY DON'T PRACTICE. The better you can play, the more you will enjoy music. So practice! Even 5 minutes a day is better than nothing!





## Meet our Flute Day Guest Artist ~ Dr. Terri Sánchez



Terri Sánchez is a Miyazawa Performing Artist and the newly appointed Assistant Professor of Flute at Bowling Green State University. Legendary flutist Paula Robison writes, “Sánchez has a beautiful presence as a player, and her sparkling clear sound spins out and fills the air with poetry.” After Sánchez premiered his new work for flute and piano, *Archetypes*, composer George Chave wrote, “her ability to pull the audience in and take them along for the ride is a true joy. Terri is a musician’s musician.” She is the author of *The Aspiring Flutist's Practice Book Series* published by Carolyn Nussbaum Music Co. and her recent compositions include *The Walrus* and *the Carpenter* and *The Red Queen* for flute/narrator and piano as well as *Scarborough Fantasy* for Solo Flute. She performs on a Miyazawa Classic Rose Silver flute.

Sánchez is a laureate of many national competitions: 1st Prize, National Flute Association Orchestral Audition Competition, 2nd Prize, NFA Young Artist Competition (along with “Best Performance of the Newly Commissioned Work”), 1st Prize, San Diego Flute Guild Artist Gold Competition, 2nd Prize, Myrna W. Brown Artist Competition, 2nd Prize, Upper Midwest Flute Society Young Artist Competition and Finalist, Walfrid Kujala Piccolo Competition. She also performed with the SMU Meadows and UNT Symphony Orchestras as a winner of both university concerto competitions.

An advocate for musician self-care and positive practice sessions, Sánchez is dedicated to creating resources for musicians that help them release practice anxiety and discover their true potential in the practice room. She has given numerous presentations based on these topics at National Flute Association Conventions, flute festivals and universities across the country. Each summer, she performs and teaches as a faculty member for *Floot Fire*, week-long summer masterclasses for beginner through advanced high school flutists. Sánchez was the flute professor for the University of Texas at Arlington from 2013-2021 where she was also the founder and creative director of the *Maverick Flute Choir*, a unique flute ensemble that sought to engage and inspire audiences with an unconventional fusion of classic, contemporary, original, and collaborative musical works, often fused with a wide variety of other artistic mediums. Under her guidance, the MFC wrote and performed four original “musical plays” at local, state and national festivals and conventions: *Take a Chance*, *The Princess & The Dragon*, *As the Fog Descends Upon Us*, and *I Dream of Flute Choir*. Recently, she created two online courses for flutists and teachers of all levels, *Fall in Love With Your Flute* and the *Flute Teacher Superhero Course*.

Sánchez received her Doctor of Musical Arts degree in Flute Performance, with a secondary emphasis in Music Education, from the University of North Texas, where she worked as a Teaching Fellow and Flute Choir conductor. She earned her Master’s degree at Southern Methodist University and her Bachelor’s degree at the University of Colorado at Boulder. Her past flute instructors include Leticia Ledesma, Helen Blackburn, Jean Larson-Garver, Alexa Still, Kara Kirkendoll Welch, Deborah Baron, Terri Sundberg and Elizabeth McNutt. She is especially grateful to her two mentors, Claire Johnson and Gabriel Sánchez.

# SAINT LOUIS AREA TEACHERS

Dr. Matthew Allison  
717-538-8040  
allisonflutestudio@gmail.com  
Metro Illinois

Dr. Wendy Hymes  
314-266-8705  
info@wendyhymes.com  
www.wendyhymes.com  
Creve Coeur

Paula Bernhardt  
618-559-6206  
paulab08@yahoo.com  
Saint Charles and St. Louis Counties

Jennifer Toro Mazzoni  
314-394-1167  
jtmazzoni@yahoo.com  
Ballwin, MO 63021

Jennifer Garrison Brown  
314.772.8341  
flutefever@yahoo.com  
South County

Marcie Monaco  
843.814.3397  
marciemonaco@gmail.com  
monacomusicstudio.com  
O'Fallon/Lebanon/Edwardsville

Dr. Kristi Cardoni  
702-439-1215  
kristi7997@yahoo.com  
Saint Charles/West County

Dr. Shelly Monier  
636-375-6205  
slmonier@yahoo.com  
Florissant/Edwardsville

Lisa Gilbert  
314-606-9374  
lisakristingilbert@gmail.com  
Webster Groves

David Nischwitz  
314-910-7899  
dnischwitz@gmail.com  
South City

Carolyn Hoyer  
314-780-0003  
allonsyl5@charter.net  
Webster Groves

Clara Loy Richter  
314-753-4383  
richter.cel@gmail.com  
South St. Louis/Webster Groves/  
Faust Park  
Webster Community Music School

Jalene Huang  
314-610-2054  
jalenehuang@gmail.com  
West County

*If you would like to be added to the teacher roster for the newsletter and website, please email Maile Signorotti at [thehawaiianflutist@gmail.com](mailto:thehawaiianflutist@gmail.com).*



# PHOTO GALLERY – FLUTE DAY 2020



# FSSL BOARD OF DIRECTORS

President/Newsletter Editor – Dr. Shelly Monier

Vice President/Flute Choir Director – Nicholas Baker

Treasurer – Colleen Donohue

Secretary – Paula Bernhardt

Social Media Administrator – Marcie Monaco

Newly Appointed Newsletter Editor – Maile Signorotti

Board Member – Ron Simmons

Board Member – Resilda Lala

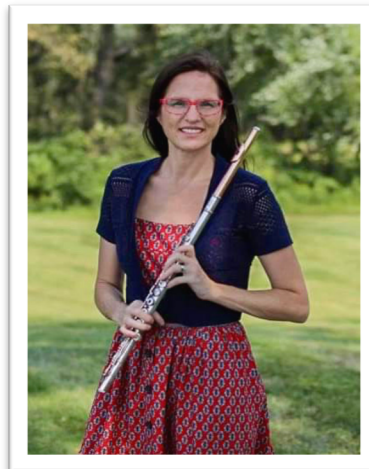
---

Website: [www.flutesocietyofsaintlouis.com](http://www.flutesocietyofsaintlouis.com)

Email: [flutesocietyofsaintlouis@gmail.com](mailto:flutesocietyofsaintlouis@gmail.com)

---

## Welcome New Board Member



**Marcie Monaco**



## FOR SALE

### Altus Flute - \$4500

Model 1107-SRBO-14K

Handmade

958 Britannia solid silver head and body

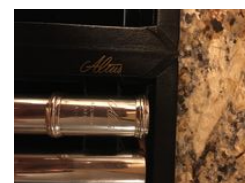
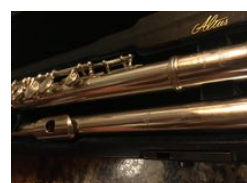
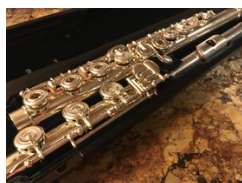
Hand-cut headjoint with 14K gold riser

Open Hole

Offset G

B-foot with Gizmo Key

French Case and Cover



"By using 958 Britannia silver, this flute obtains a wide sound with a darker coloring than the preceding instruments. Because of the modulation capacity of the sound, the notes' carrying capacity and its dynamic range, the ALTUS 1107 is particularly suitable for the gifted ambitious flutist." -Altus Flutes

**Contact Kylie Teter for more information**

PHONE: 816. 277.5927 EMAIL: [kmfluting@gmail.com](mailto:kmfluting@gmail.com)

### Pearl Piccolo - \$700

Model 105E

Split E Mechanism

Grenaditte High Wave headjoint

Grenaditte body and headjoint

Silver plate mechanism

Pearl's Pinless Mechanism

Durable for band and orchestra use

Includes case and padded case cover



"The PFP-105E is made of a remarkable proprietary material, Grenaditte. Grenaditte is impervious to temperature fluctuations, and maintains precise pitch and tonal center." -Pearl

**Contact Fausto Barrera for more information**

EMAIL: [Fausto.barrera@outlook.com](mailto:Fausto.barrera@outlook.com)





**Flute Society Membership Form  
September 1, 2021 - August 31, 2022**

**Please Print Clearly**

Name: \_\_\_\_\_

Address: \_\_\_\_\_

City: \_\_\_\_\_ State: \_\_\_\_\_ Zip: \_\_\_\_\_

Phone: \_\_\_\_\_ Email: \_\_\_\_\_ Age: \_\_\_\_\_

Occupation: \_\_\_\_\_ Do You Give Lessons? \_\_\_\_\_

**Please Circle all that apply:**                  New Member                  Renewal

**Flute Society Dues: (Please Check One)**

Early Regular Member (Oct. 31) \$25.00 \_\_\_\_\_

Early Student (full-time/Oct. 31) \$10.00 \_\_\_\_\_

Regular Member \$30.00 \_\_\_\_\_

Student (full-time) \$15.00 \_\_\_\_\_

Corporate \$50.00 \_\_\_\_\_

*Please List School:* \_\_\_\_\_

Lifetime Member \$500.00 \_\_\_\_\_

Tax Deductible Donation \_\_\_\_\_

**Total Amount Enclosed: \$** \_\_\_\_\_

**Mail and Make Checks Payable To:      Flute Society of Saint Louis  
10140 Pebble Beach Dr.  
Saint Louis, MO 63114**

**Interests: (check all that apply)**

Playing in Flute Choir \_\_\_\_\_

Helping with Events \_\_\_\_\_

Performing in our Concerts \_\_\_\_\_

Playing informally with other flutists \_\_\_\_\_

**Favorite Events: (check all that apply)**

Concerts \_\_\_\_\_

Lectures \_\_\_\_\_

Flute Day \_\_\_\_\_

Masterclasses \_\_\_\_\_

Competitions \_\_\_\_\_

Trivia Night \_\_\_\_\_



Please Send Materials To:

FSSL  
3008 Pershing Blvd.  
Granite City, IL 62040

## 2022 FLUTE DAY REGISTRATION

Please print clearly

NAME (Last, First) \_\_\_\_\_ Phone \_\_\_\_\_

Email \_\_\_\_\_ (Check one) Student \_\_\_\_\_ Adult \_\_\_\_\_

		<i><b>Fee</b></i>	<i><b>Amount Due</b></i>
<b>Registration</b> <i>- early registration must be received by 3/31/22</i>	Early Registration	Member	\$20
		Non-Member	\$35
	Day of Registration	Member	\$40
		Non-Member	\$50
	Family Members	Non-flutists ( <i>parents or band director</i> )	\$5 each
	Studio Group Registration (Not available for day of)	Private teacher ( <i>must be member</i> ) and at least 4 students for studio registration ( <i>no student membership required</i> ). List student names in the space below.	\$10 each
<b>Membership 2021-2022</b>	Adult	\$30	
	Student	\$15	
	Lifetime	\$500	
<b>Competitions</b> <i>- please include masterclass/competition application with this form</i>  <i>- group studio registration applicants must also include membership fees in order to participate in these events</i>	Dr. Sánchez Masterclass – High School		\$20
	Dr. Sánchez Masterclass – Adult/College		\$30
	MS/HS Masterclass		\$10
	Young Artist – High School		\$30
	Young Artist – College		\$40
<b>Flute Day T-shirt</b> <i>- check style and circle size</i>	___ Short Sleeve T-shirt	___ Sweatshirt	T-shirt: \$15
	S M L L XXL +\$2	S M L XL. XXL +\$2	Sweat: \$25
<b>Panera Box Lunch</b> <i>- clearly mark choice(s)</i>  <i>- each box served with chips and cookie</i>	___ Smoked Turkey		\$15 each
	___ Smoked Ham & Swiss		
	___ Mediterranean Veggie		
	___ Classic Salad ( <i>no meat</i> )		
<b>Lunches available for pre-order only by 3/31/22</b> ( <i>water/soda provided by FSSL</i> )			
<b>TOTAL AMOUNT ENCLOSED</b> ( <i>Checks payable to FSSL</i> )			

**FSSL USE ONLY**

**PREPAID**

Cash \_\_\_\_\_  
Check \_\_\_\_\_  
Check No. \_\_\_\_\_

**DAY OF**

Cash \_\_\_\_\_  
Check \_\_\_\_\_  
Check No. \_\_\_\_\_



## Young Artist Competition 2022

Name (Last, First) \_\_\_\_\_ Phone \_\_\_\_\_

Email \_\_\_\_\_ School \_\_\_\_\_

### Check the event for which you are applying

Enter Total Amount Below

<u>Name of Event</u>	<u>Application Fee</u>
<input type="checkbox"/> College Young Artist Competition <i>1<sup>st</sup> Prize - \$400.00 2<sup>nd</sup> Prize = \$150.00</i>	\$40.00
<input type="checkbox"/> High School Young Artist Competition <i>1<sup>st</sup> Prize = \$200.00 2<sup>nd</sup> Prize = \$75.00</i>	\$30.00
<input type="checkbox"/> FSSL Membership fee	\$15.00

**TOTAL** \_\_\_\_\_

Venmo total amount to @Shelly-Monier

Email this form to flutesocietyofsaintlouis@gmail.com

**Application Fee is Non-Refundable - Applicants must be a member of FSSL**

### Procedures and Guidelines

#### Preliminary Application Deadline ~ Received by Friday, February 28, 2022

- All applicants must live within a 500-mile radius of St. Louis and be members of the Flute Society of Saint Louis.
- All applicants must currently be enrolled at a secondary public, private, or home school, or be enrolled at a university
- Previous 1<sup>st</sup> prize FSSL Young Artist winners may not compete for same competition again.
- Preliminary Round: Audio recordings must be received by midnight (CST) on February 28 @ slmonier@yahoo.com

**Do not talk on the audio recording Mp3 formatting NO EDITING**

- Final Round: Finalists will perform in-person on Saturday, April 9, 2022 in an afternoon concert at FLUTE DAY.
- All preliminary round submissions must be recorded without piano accompaniment.
- A pianist will be provided for all finalists.
- Finalists will be notified by March 7, 2022.

### Young Artist Competition Repertoire Requirements

#### High School

##### PRELIMINARY (choose one selection to record)

- Melodious & Progressive Studies, Book II  
Anderson: C# minor, pg. 59 (*mm. 1-50-no repeat*)
- Voxman – Selected Studies for Flute  
Ferling: E minor, pg. 8 (*all*)

##### FINAL (choose one selection – IN PERSON)

- Bach: Sonata in C Major, BWV 1033 (*both mvmts.-no repeats*)  
I. Andante II. Allegro
- Mozart: Andante in C Major, K. 315

#### College

##### PRELIMINARY (record both selections without piano)

- Köhler: op. 33, book 2, No. 2 “*Allegro Moderato*”
- Handel: Sonata in B minor, HWV 367b  
I. Largo II. Vivace III. Presto

##### FINAL (IN PERSON)

##### Required Selection

- Hailstork: Pied Piper of Harlem for solo flute  
I. *Here Come de Piper...*  
II. *Wid a Twinkle In His Eyes*  
III. *Git On Board Li'l Chillin*

##### Choose One:

- CPE Bach: Sonata in A minor (all mvmts.- no repeats)
- Rutter: Suite Antique  
IV. Waltz V. Chanson VI. Rondeau





**FLUTE DAY 2022**  
Masterclass Application Form  
Saturday, April 9, 2022

Name (Last, First) \_\_\_\_\_ Email \_\_\_\_\_

Category: Middle/High School \_\_\_\_\_ College/Graduate \_\_\_\_\_

*-Circle one and provide name of school*

**Check all events for which you are applying**

*Enter Total Amounts on Registration form*

<u>Name of Event</u>	<u>Application Fee</u>
<input type="checkbox"/> Masterclass with Dr.Terri Sánchez – Adult/College	\$30.00
<input type="checkbox"/> Masterclass with Dr. Terri Sánchez – High School	\$20.00
<input type="checkbox"/> Middle/High School Masterclass	\$10.00

To apply for the Sánchez masterclass, submit a YouTube link of a 5-8 minute etude or solo (no piano required), this application, and the registration form to [slmonier@yahoo.com](mailto:slmonier@yahoo.com) by February 28, 2022. This must be a recent performance within the last year. Applicants will be notified by March 7, 2022 via email.

Selection for Masterclass \_\_\_\_\_

**Non-Refundable Application Fee** *-Applicants must include registration form and fees as well as be a member of FSSL*

**Payment information: Send payment and check to address listed on Registration Form or venmo all fees to @Shelly-Monier.**

**Nomination Section Below for ONLY Middle/High School Masterclass Applicants**

*To be completed by either student’s school Music Director or Private Teacher by 2/28/2022.*

Briefly describe the student’s enthusiasm toward playing the flute.

In your opinion, explain how the student will benefit if selected to play in this master class.

Print Name \_\_\_\_\_ Signature \_\_\_\_\_ Date \_\_\_\_\_